

Why your green waste bin may not be collected

**X NO!**



Bin too heavy for truck to lift (<50kg).

If your bin lid will not close or your bin is too heavy.

Bin overfull, lid must be closed.

Who do I contact ?

For enquiries, supply and bin maintenance issues please contact:  
 JJ Richards and Sons Pty Ltd  
 31-37 Sawmill Circuit, Hume ACT 2620  
[www.actgreenwaste.jjrichards.com.au](http://www.actgreenwaste.jjrichards.com.au)  
**02 6270 5000**

Service provider on behalf of the Act Government.

PRINTED ON RECYCLED PAPER

The plastic wrapper is biodegradable and should be disposed of in your red lid garbage bin.



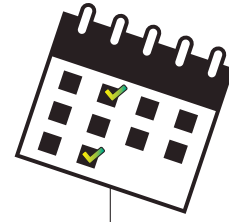
**WHEN WILL MY BIN BE COLLECTED?**

Green bins will be collected fortnightly, please check the collection schedule below.

Please put your bin out before 7.00am on the day of service.

If you require further information contact JJ Richards on (02) 6270 5000 or visit

[www.actgreenwaste.jjrichards.com.au](http://www.actgreenwaste.jjrichards.com.au)



COLLECTION DAY	YELLOW WEEK	GREEN WEEK
Tuesday	Duffy, Holder	Weston
Wednesday	Rivett	Stirling, Waramanga
Thursday	Chapman	Fisher
Friday	Kambah (west)	Kambah (east)

**2017 - 2018**

APRIL							MAY							JUNE							
S	M	T	W	T	F	S	S	M	T	W	T	F	S	S	M	T	W	T	F	S	
						1	1	2	3	4	5	6	1	2	3						
2	3	4	5	6	7	8	7	8	9	10	11	12	13	4	5	6	7	8	9	10	
9	10	11	12	13	14	15	14	15	16	17	18	19	20	11	12	13	14	15	16	17	
16	17	18	19	20	21	22	21	22	23	24	25	26	27	18	19	20	21	22	23	24	
23	24	25	26	27	28	29	28	29	30	31				25	26	27	28	29	30		
30																					

JULY							AUGUST							SEPTEMBER							
S	M	T	W	T	F	S	S	M	T	W	T	F	S	S	M	T	W	T	F	S	
						1	1	2	3	4	5		1	2							
2	3	4	5	6	7	8	6	7	8	9	10	11	12	3	4	5	6	7	8	9	
9	10	11	12	13	14	15	13	14	15	16	17	18	19	10	11	12	13	14	15	16	
16	17	18	19	20	21	22	20	21	22	23	24	25	26	17	18	19	20	21	22	23	
23	24	25	26	27	28	29	27	28	29	30	31			24	25	26	27	28	29	30	
30	31																				

OCTOBER							NOVEMBER							DECEMBER							
S	M	T	W	T	F	S	S	M	T	W	T	F	S	S	M	T	W	T	F	S	
1	2	3	4	5	6	7	1	2	3	4				1	2						
8	9	10	11	12	13	14	5	6	7	8	9	10	11	3	4	5	6	7	8	9	
15	16	17	18	19	20	21	12	13	14	15	16	17	18	10	11	12	13	14	15	16	
22	23	24	25	26	27	28	19	20	21	22	23	24	25	17	18	19	20	21	22	23	
29	30	31					26	27	28	29	30			24	25	26	27	28	29	30	
														31							

JANUARY							FEBRUARY							MARCH						
S	M	T	W	T	F	S	S	M	T	W	T	F	S	S	M	T	W	T	F	S
1	2	3	4	5	6		1	2	3	4	5		1	2	3					
7	8	9	10	11	12	13	4	5	6	7	8	9	10	4	5	6	7	8	9	10
14	15	16	17	18	19	20	11	12	13	14	15	16	17	11	12	13	14	15	16	17
21	22	23	24	25	26	27	18	19	20	21	22	23	24	18	19	20	21	22	23	24
28	29	30	31				25	26	27	28				25	26	27	28	29	30	31

APRIL							MAY							JUNE						
S	M	T	W	T	F	S	S	M	T	W	T	F	S	S	M	T	W	T	F	S
1	2	3	4	5	6	7	1	2	3	4	5		1	2						
8	9	10	11	12	13	14	6	7	8	9	10	11	12	3	4	5	6	7	8	9
15	16	17	18	19	20	21	13	14	15	16	17	18	19	10	11	12	13	14	15	16
22	23	24	25	26	27	28	20	21	22	23	24	25	26	17	18	19	20	21	22	23
29	30						27	28	29	30	31			24	25	26	27	28	29	30



WELCOME TO YOUR **GREEN BIN** & GREEN WASTE SERVICE

Everything you need to know about the new addition to your household.



## What is Green Waste?

Green Waste refers to garden organic waste such as weeds, grass clippings, prunings, flowers, leaves, twigs and small branches.

### Can I still drop off green waste myself?

You can still self haul your green waste to the below facilities. These facilities are open seven days a week but hours differ between operators. Check the respective operator's website or call for details.

Two locations include:

#### Corkhill Bros

Mugga Lane Resource Management Centre. Contact 02 6280 4011 or visit the Corkhill Bros Website.

#### Canberra Sand and Gravel

West Belconnen Resource Management Centre. Contact 02 6255 1995 or visit the Canberra Sand and Gravel Website.

### What happens to your green waste?

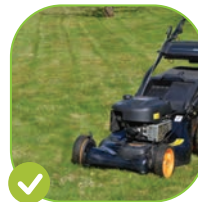
Your green waste will be collected and recycled through the program partner Corkhill Bros, where it will be processed into a high quality product.



## What can go in my GREEN WASTE BIN?



**YES!**



Grass clippings



Leaves



Branches

No longer than 45 centimetres and a diameter of 10 centimetres



Flowers



Garden prunings



Weeds

## What items can't go in my GREEN WASTE BIN?



**NO!**

**Do not** place these items in your green waste bin.



Soil



Stumps and logs



Plastic bags and garbage



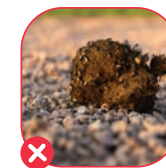
Construction material



Sawdust and ash



Food



Animal waste



Recyclables



Processed timber

### Why can't other things go in my Green Waste bin?



Plastic pots & bags

**These items may cause safety issues and will ruin the quality of the product.**

### Why don't we send green waste to landfill?

By recycling green waste you can:

- Reduce green house gas emissions
- Reduce waste to landfill